

# IMPLANT OVERDENTURE CHEAT SHEET

1

## APPOINTMENT 1

The patient had surgery several months ago, and now they are back with fully integrated implants ***that are under the tissue***

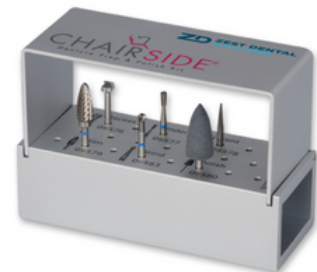
### OBJECTIVE

- To make a patient go from **this** to **this**:
- To adjust the inside of the healing denture
- To start making the final denture



### How to set up:

- Laser**  
to remove the gums overlying the implants
- The old surgical guide**  
to find the implants
- Flowable composite**  
to help find the implants
- Implant screwdriver**
- Various locators**
- Metal housings**  
number of housings based on number of implants
- Locator placement tool with plastic tabs**
- Locator driver and torque wrench**
- PIP paste**
- Horseshoe articulating paper**
- Ink stick**
- Soft reline**
- Laptop computer and Dandy scanner**
- Impression trays**
- Impression material**
- Torque wrench (circular head)**



4 PK

## 2

### APPOINTMENT 2: BITE BLOCKS

#### OBJECTIVE

Using wax blocks, determine:

- Midline
- Shade
- Smile line
- Occlusion

#### How to set up:

- Torch
- Spatula
- Lots of gauze
- Buffalo knife
- Patient hand-mirror
- Shade guide
- Futar bite
- Straight handpiece and acrylic bur
- Dandy computer

## 3

### APPOINTMENT 3: TRY-IN

#### OBJECTIVE

Final chance to make any changes to the denture before it is finalized

#### How to set up:

- Patient hand-mirror
- Straight handpiece and acrylic bur
- Horseshoe shaped articulating paper
- Camera
- Try-in consent form



#### Don't Forget:

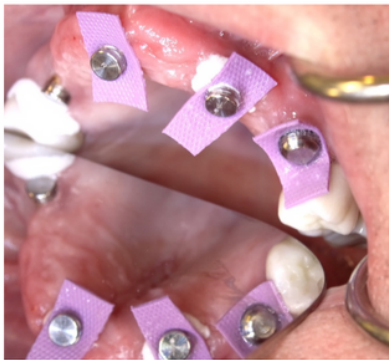
When you are setting up the next appointment, make it longer (90 min)

# 4

## APPOINTMENT 4: FINAL SEATING AND METAL HOUSING PICK-UP

### OBJECTIVE

To attach the retention caps and metal housings to the inside of the denture

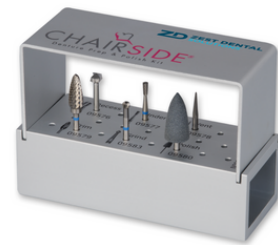


### How to set up:

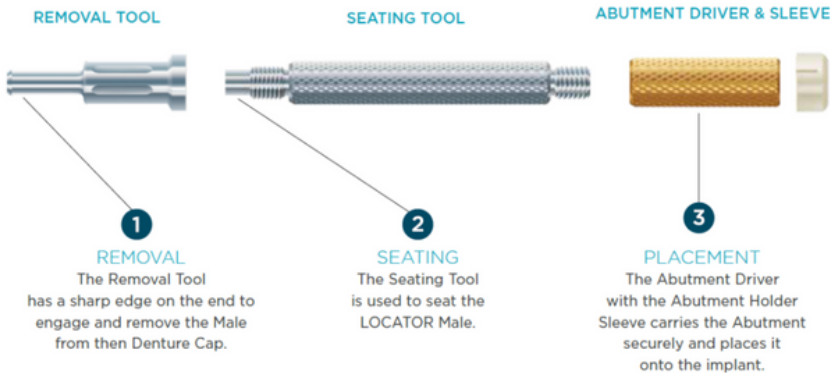
- Straight handpiece
- Same metal housings from appointment #1
- Horseshoe articulating paper
- Denture adjustment kit
- Patient hand-mirror
- Chairside *hard-reline* material with tips
- Retention cap replacement tool
- Block-out material, rubber dam squares



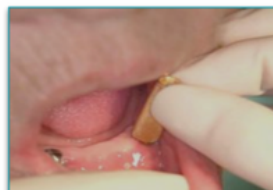
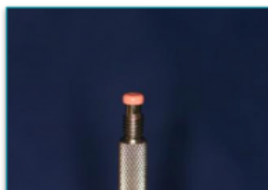
4 PK



## The LOCATOR® Core Tool



PPT008



# 5

## APPOINTMENT 5: DENTURE PICK-UP

### At the denture pick-up appointment:

- Try in the denture
- Snap in the housings
- Try in the denture again
- Add undercuts in the concavities within the denture
- Protect undercuts around the implant/locators/adjacent teeth
- Use hard acrylic to pick up the metal housings
- Polish

---

## THANK YOU!

I welcome and encourage you to continue the conversation with me at the contact information below.

Be happy, be healthy, and be better,

**Ankur Gupta, DDS**

734.972.8936  
drgupta@northridgevillefamilydentistry.com  
www.bebetterseminars.com



 facebook.com/emailankur

 @bebetterseminars

Copyright © Ankur Gupta, DDS  
BeBetter Seminars

This material has been researched and prepared by Ankur Gupta DDS / BeBetter Seminars.  
Please do not share or reprint without express consent.  
Thank you.